

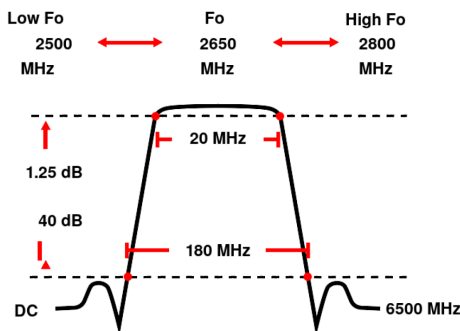


Manually Tunable Band Pass Filter WTBCJV4-2500-2800-20-180-40SSK

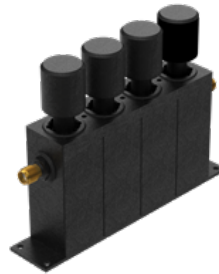
Range 2500 to 2800 MHz Bandwidth 20 MHz Slopes 80 MHz Attenuation 40 dB min.

Passband	20 MHz bandwidth tunable from 2500 to 2800 MHz
Insertion Loss	1 dB max. at Fo (1.25 dB max. at Corners)
Return Loss	14 dB min. (VSWR 1.5:1 max.)
Stopband	DC to Fo - 90 MHz and Fo + 90 to 6500 MHz
Stopband Attenuation	40 dB min.
Operating Temperature	15 °C to 45 °C
Power Handling	will be quoted on request (See our warranty)
Dimensions (L x W x H)	max. 100 x 20 x 50 mm (connectors may protrude)
Approx. Weight	0.25 kg
Mounting Provision	10 mm flanges on both ends with M3 threaded holes
Connector 1	SMA - Female
Connector 2	SMA - Female
Tuning	Tuning with knobs

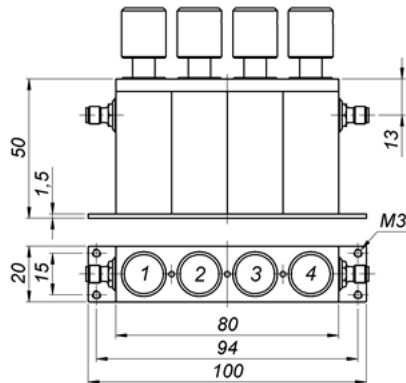
Typical Performance



4 Section Cavity Design



Technical drawing



Connector Options:

SMA - Female
SMA - Male
N - Female
N - Male
BNC - Female
BNC - Male

Unit prices	1-4 pieces	5-9 pieces	10-24 pieces	25-49 pieces	50-99 pieces	100+ pieces
	1790 €	1701 €	1611 €	1522 €	1432 €	1343 €

Delivery Terms

FCA Andechs (free carrier) according to Incoterms 2020. Regarding payment terms and warranty see Terms and Conditions. Delivery time: normally 4 to 6 weeks - depending on quantity ordered and on our work load. **Customer is responsible for observing all applicable export laws in regard to filter application and location of end user.**

Wainwright Instruments GmbH
Graf-Rasso-Street. 1
82346 Andechs
Germany

Contact
Phone: +49 (0) 8152 918230
Telefax: +49 (0) 8152 918255
Email: info@wainwright-filters.com

Legal notes
Managing director: Terence Wainwright
Registering court: Amtsgericht München Abt.B Nr. 58192
VAT Id number: DE 128249711