



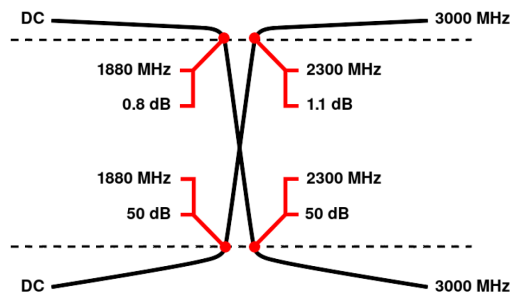
Diplexer/Duplexer (LP/HP)

WDK8+8-DC-1880/2300-3000-50E3

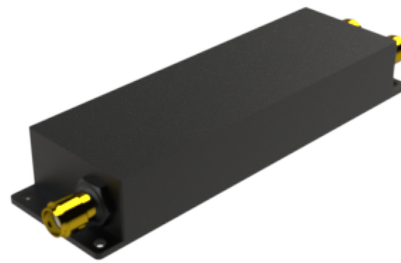
Passband 1: DC to 1880 MHz Passband 2: 2300 to 3000 MHz

Passbands	Band 1 (Low Pass) DC to 1880 MHz	Band 2 (High Pass) 2300 to 3000 MHz
Insertion Loss	0.8 dB max.	1.1 dB max.
Return Loss	14 dB min.	14 dB min.
Stopbands	2300 to 3000 MHz	DC to 1880 MHz
Stopband Attenuation	50 dB min.	50 dB min.
Operating Temperature	15 °C to 45 °C	
Power Handling	max. 10 W CW into a 2:1 VSWR (See our warranty)	
Dimensions (L x W x H)	max. 86 x 25 x 13.2 mm (connectors may protrude)	
Approx. Weight	0.1 kg	
Mounting Provision	5.5 mm flanges on both ends	
Connector Common	N - Female	
Connector 1	N - Female	
Connector 2	N - Female	

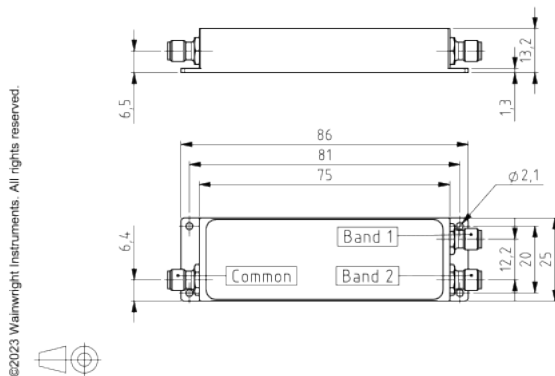
Typical Performance



8+8 Section LC Design



Technical drawing



Connector Options:
SMA - Female

Unit prices	1-4 pieces 1150 €	5-9 pieces 1093 €	10-24 pieces 1035 €	25-49 pieces 978 €	50-99 pieces 920 €	100+ pieces 863 €
--------------------	-----------------------------	-----------------------------	-------------------------------	------------------------------	------------------------------	-----------------------------

Delivery Terms

FCA Andechs (free carrier) according to Incoterms 2020. Regarding payment terms and warranty see Terms and Conditions. Delivery time: normally 4 to 6 weeks - depending on quantity ordered and on our work load. **Customer is responsible for observing all applicable export laws in regard to filter application and location of end user.**

Wainwright Instruments GmbH
Graf-Rasso-Street. 1
82346 Andechs
Germany

Contact
Phone: +49 (0) 8152 918230
Telefax: +49 (0) 8152 918255
Email: info@wainwright-filters.com

Legal notes
Managing director: Terence Wainwright
Registering court: Amtsgericht München Abt.B Nr. 58192
VAT Id number: DE 128249711