



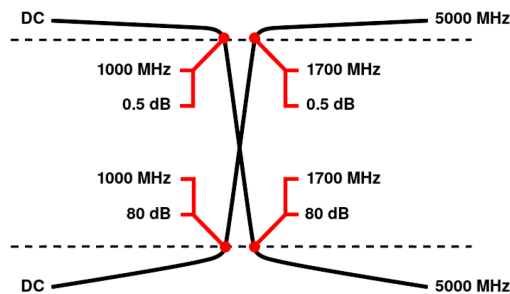
Diplexer/Duplexer (LP/HP)

WDK7+6-DC-1000/1700-5000-80S3

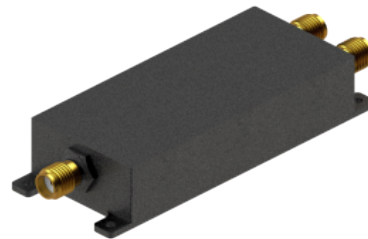
Passband 1: DC to 1000 MHz Passband 2: 1700 to 5000 MHz

	Band 1 (Low Pass)	Band 2 (High Pass)
Passbands	DC to 1000 MHz	1700 to 5000 MHz
Insertion Loss	0.5 dB max.	0.5 dB max.
Return Loss	17 dB min.	17 dB min.
Stopbands	1700 to 5000 MHz	DC to 1000 MHz
Stopband Attenuation	80 dB min.	80 dB min.
Operating Temperature	15 °C to 45 °C	
Power Handling	max. 10 W CW into a 2:1 VSWR (See our warranty)	
Dimensions (L x W x H)	max. 71 x 27 x 13.2 mm (connectors may protrude)	
Approx. Weight	0.09 kg	
Mounting Provision	5.5 mm flanges on both ends	
Connector Common	SMA - Female	
Connector 1	SMA - Female	
Connector 2	SMA - Female	

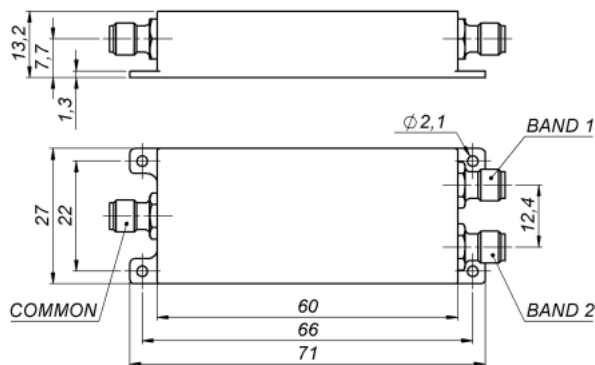
Typical Performance



7+6 Section LC Design



Technical drawing



Connector Options:
SMA - Female

Unit prices	1-4 pieces	5-9 pieces	10-24 pieces	25-49 pieces	50-99 pieces	100+ pieces
	1090 €	1036 €	981 €	927 €	872 €	818 €

Delivery Terms

FCA Andechs (free carrier) according to Incoterms 2020. Regarding payment terms and warranty see Terms and Conditions. Delivery time: normally 4 to 6 weeks - depending on quantity ordered and on our work load. **Customer is responsible for observing all applicable export laws in regard to filter application and location of end user.**

Wainwright Instruments GmbH
Graf-Rasso-Street. 1
82346 Andechs
Germany

Contact
Phone: +49 (0) 8152 918230
Telefax: +49 (0) 8152 918255
Email: info@wainwright-filters.com

Legal notes
Managing director: Terence Wainwright
Registering court: Amtsgericht München Abt.B Nr. 58192
VAT Id number: DE 128249711