



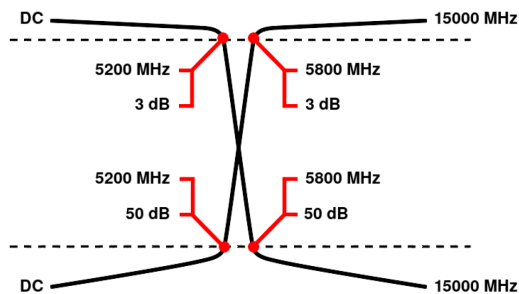
Diplexer/Duplexer (LP/HP)

WDKX13+12-DC-5200/5800-15000-50S3

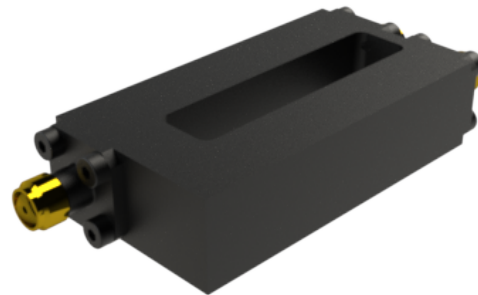
Passband 1: DC to 5200 MHz Passband 2: 5800 to 15000 MHz

	Band 1 (Low Pass)	Band 2 (High Pass)
Passbands	DC to 5200 MHz	5800 to 15000 MHz
Insertion Loss	3 dB max.	3 dB max.
Return Loss	14 dB min.	12 dB min.
Stopbands	5800 to 15000 MHz	DC to 5200 MHz
Stopband Attenuation	50 dB min.	50 dB min.
Operating Temperature	15 °C to 45 °C	
Power Handling	max. 5 W CW into a 2:1 VSWR (See our warranty)	
Dimensions (L x W x H)	max. 52 x 27 x 12.7 mm (connectors may protrude)	
Approx. Weight	0.08 kg	
Mounting Provision	4 x M2.5 threaded holes in base	
Connector Common	SMA - Female	
Connector 1	SMA - Female	
Connector 2	SMA - Female	

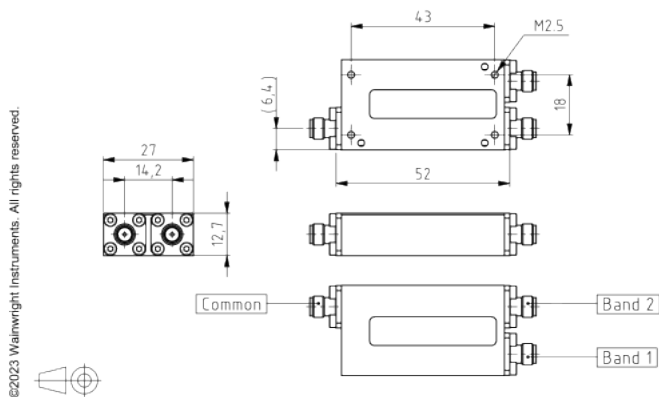
Typical Performance



13+12 Section LC Design



Technical drawing



Connector Options:

SMA - Female
SMA - Male

Unit prices	1-4 pieces	5-9 pieces	10-24 pieces	25-49 pieces	50-99 pieces	100+ pieces
	1980 €	1881 €	1782 €	1683 €	1584 €	1485 €

Delivery Terms

FCA Andechs (free carrier) according to Incoterms 2020. Regarding payment terms and warranty see Terms and Conditions. Delivery time: normally 4 to 6 weeks - depending on quantity ordered and on our work load. **Customer is responsible for observing all applicable export laws in regard to filter application and location of end user.**

Wainwright Instruments GmbH
Graf-Rasso-Street. 1
82346 Andechs
Germany

Contact
Phone: +49 (0) 8152 918230
Telefax: +49 (0) 8152 918255
Email: info@wainwright-filters.com

Legal notes
Managing director: Terence Wainwright
Registering court: Amtsgericht München Abt.B Nr. 58192
VAT Id number: DE 128249711