



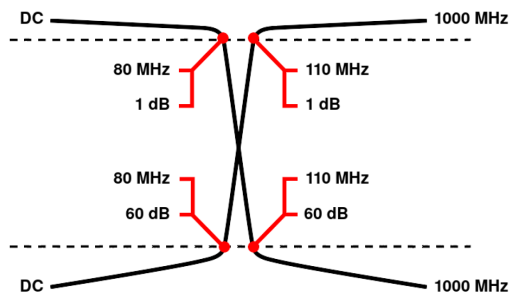
# Diplexer/Duplexer (LP/HP)

## WDJ7+7-DC-80/110-1000-60S3

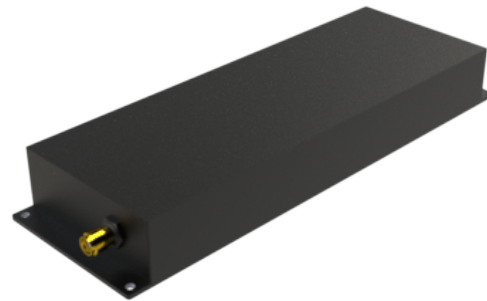
Passband 1: DC to 80 MHz      Passband 2: 110 to 1000 MHz

	Band 1 (Low Pass)	Band 2 (High Pass)
Passbands	DC to 80 MHz	110 to 1000 MHz
Insertion Loss	1 dB max.	1 dB max.
Return Loss	14 dB min.	14 dB min.
Stopbands	110 to 1000 MHz	DC to 80 MHz
Stopband Attenuation	60 dB min.	60 dB min.
Operating Temperature	15 °C to 45 °C	
Power Handling	max. 20 W CW into a 2:1 VSWR (See our <a href="#">warranty</a> )	
Dimensions (L x W x H)	max. 165 x 54 x 21 mm (connectors may protrude)	
Approx. Weight	0.4 kg	
Mounting Provision	7.5 mm flanges on both ends with M3 threaded holes	
Connector Common	SMA - Female	
Connector 1	SMA - Female	
Connector 2	SMA - Female	

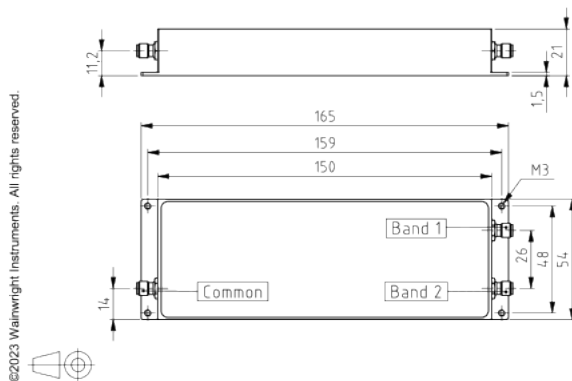
## Typical Performance



## 7+7 Section LC Design



## Technical drawing



### Connector Options:

SMA - Female  
SMA - Male  
N - Female  
N - Male

Unit prices	1-4 pieces	5-9 pieces	10-24 pieces	25-49 pieces	50-99 pieces	100+ pieces
	1660 €	1577 €	1494 €	1411 €	1328 €	1245 €

## Delivery Terms

FCA Andechs (free carrier) according to Incoterms 2020. Regarding payment terms and warranty see Terms and Conditions. Delivery time: normally 4 to 6 weeks - depending on quantity ordered and on our work load. **Customer is responsible for observing all applicable export laws in regard to filter application and location of end user.**

**Wainwright Instruments GmbH**  
Graf-Rasso-Street. 1  
82346 Andechs  
Germany

**Contact**  
Phone: +49 (0) 8152 918230  
Telefax: +49 (0) 8152 918255  
Email: [info@wainwright-filters.com](mailto:info@wainwright-filters.com)

**Legal notes**  
Managing director: Terence Wainwright  
Registering court: Amtsgericht München Abt.B Nr. 58192  
VAT Id number: DE 128249711