



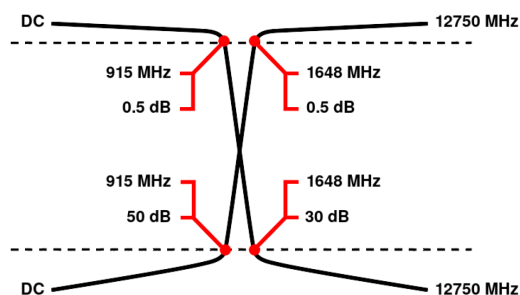
# Diplexer/Duplexer (LP/HP)

## WDKX5+4-DC-915/1648-12750-50/30S3

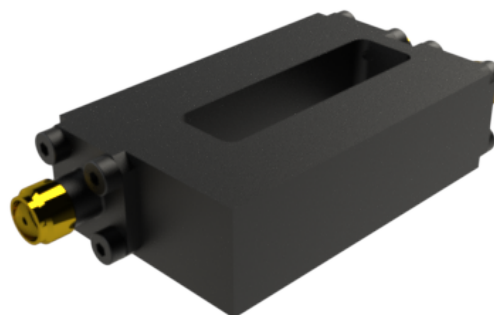
Passband 1: DC to 915 MHz      Passband 2: 1648 to 12750 MHz

	Band 1 (Low Pass)	Band 2 (High Pass)
Passbands	DC to 915 MHz	1648 to 12750 MHz
Insertion Loss	0.5 dB max.	0.5 dB max.
Return Loss	20 dB min.	15 dB min.
Stopbands	1648 to 12750 MHz	DC to 915 MHz
Stopband Attenuation	30 dB min.	50 dB min.
Operating Temperature	15 °C to 45 °C	
Power Handling	max. 5 W CW into a 2:1 VSWR (See our <a href="#">warranty</a> )	
Dimensions (L x W x H)	max. 45 x 27 x 12.7 mm (connectors may protrude)	
Approx. Weight	0.071 kg	
Mounting Provision	4 x M2.5 threaded holes in base	
Connector Common	SMA - Female	
Connector 1	SMA - Female	
Connector 2	SMA - Female	

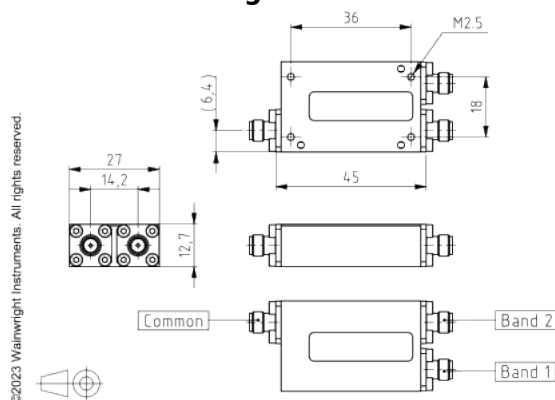
### Typical Performance



### 5+4 Section LC Design



### Technical drawing



#### Connector Options:

SMA - Female  
SMA - Male

### Unit prices

1-4 pieces	5-9 pieces	10-24 pieces	25-49 pieces	50-99 pieces	100+ pieces
1500 €	1425 €	1350 €	1275 €	1200 €	1125 €

### Delivery Terms

FCA Andechs (free carrier) according to Incoterms 2020. Regarding payment terms and warranty see Terms and Conditions. Delivery time: normally 4 to 6 weeks - depending on quantity ordered and on our work load. **Customer is responsible for observing all applicable export laws in regard to filter application and location of end user.**

**Wainwright Instruments GmbH**  
Graf-Rasso-Street. 1  
82346 Andechs  
Germany

**Contact**  
Phone: +49 (0) 8152 918230  
Telefax: +49 (0) 8152 918255  
Email: [info@wainwright-filters.com](mailto:info@wainwright-filters.com)

**Legal notes**  
Managing director: Terence Wainwright  
Registering court: Amtsgericht München Abt.B Nr. 58192  
VAT Id number: DE 128249711