



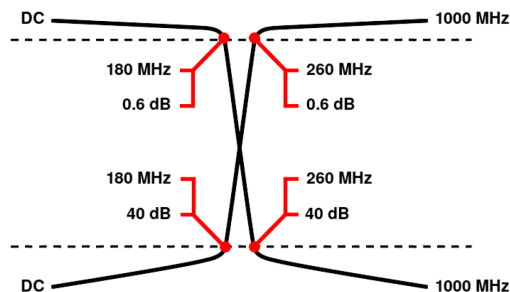
Diplexer/Duplexer (LP/HP)

WDG5+5-DC-180/260-1000-40E3

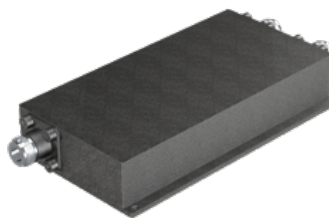
Passband 1: DC to 180 MHz Passband 2: 260 to 1000 MHz

	Band 1 (Low Pass)	Band 2 (High Pass)
Passbands	DC to 180 MHz	260 to 1000 MHz
Insertion Loss	0.6 dB max.	0.6 dB max.
Return Loss	17 dB min.	17 dB min.
Stopbands	260 to 1000 MHz	DC to 180 MHz
Stopband Attenuation	40 dB min.	40 dB min.
Operating Temperature	15 °C to 45 °C	
Power Handling	max. 300 W CW into a 2:1 VSWR (See our warranty)	
Dimensions (L x W x H)	max. 160 x 92 x 30 mm (connectors may protrude)	
Approx. Weight	0.8 kg	
Mounting Provision	6 mm flanges on both ends	
Connector Common	N - Female	
Connector 1	N - Female	
Connector 2	N - Female	

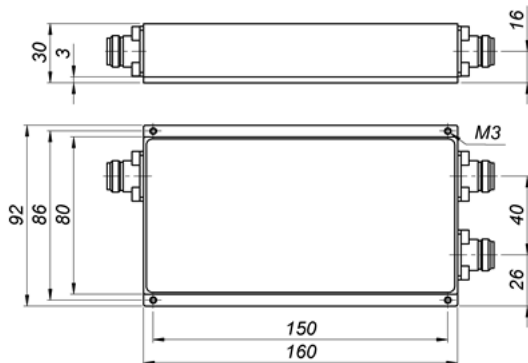
Typical Performance



5+5 Section LC Design



Technical drawing



©2015 Wainwright Instruments. All rights reserved.

Connector Options:

N - Female
N - Male

Unit prices

1-4 pieces
2580 €

5-9 pieces
2451 €

10-24 pieces
2322 €

25-49 pieces
2193 €

50-99 pieces
2064 €

100+ pieces
1935 €

Delivery Terms

FCA Andechs (free carrier) according to Incoterms 2020. Regarding payment terms and warranty see Terms and Conditions. Delivery time: normally 4 to 6 weeks - depending on quantity ordered and on our work load. **Customer is responsible for observing all applicable export laws in regard to filter application and location of end user.**

Wainwright Instruments GmbH
Graf-Rasso-Street. 1
82346 Andechs
Germany

Contact
Phone: +49 (0) 8152 918230
Telefax: +49 (0) 8152 918255
Email: info@wainwright-filters.com

Legal notes
Managing director: Terence Wainwright
Registering court: Amtsgericht München Abt.B Nr. 58192
VAT Id number: DE 128249711