



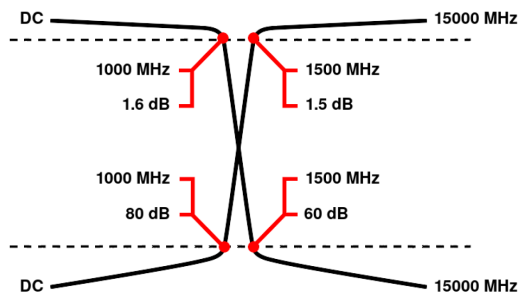
Diplexer/Duplexer (LP/HP)

WDKX11+10-DC-1000-1500-15000-80/60S3

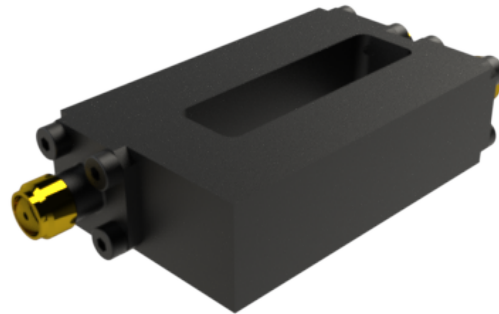
Passband 1: DC to 1000 MHz Passband 2: 1500 to 15000 MHz

	Band 1 (Low Pass)	Band 2 (High Pass)
Passbands	DC to 1000 MHz	1500 to 15000 MHz
Insertion Loss	1.6 dB max.	1.5 dB max.
Return Loss	14 dB min.	12 dB min.
Stopbands	1500 to 15000 MHz	DC to 1000 MHz
Stopband Attenuation	60 dB min.	80 dB min.
Operating Temperature	15 °C to 45 °C	
Power Handling	max. 5 W CW into a 2:1 VSWR (See our warranty)	
Dimensions (L x W x H)	max. 45 x 27 x 12.7 mm (connectors may protrude)	
Approx. Weight	0.07 kg	
Mounting Provision	4 x M2.5 threaded holes in base	
Connector Common	SMA - Female	
Connector 1	SMA - Female	
Connector 2	SMA - Female	

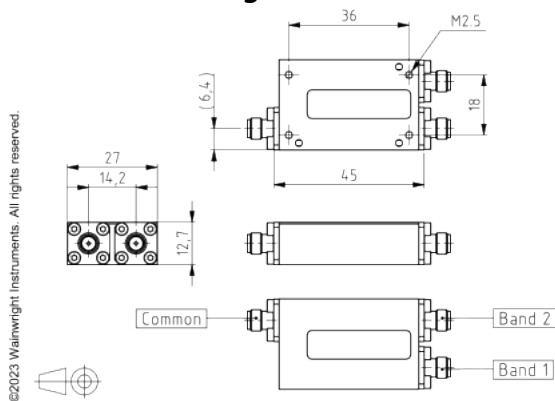
Typical Performance



11+10 Section LC Design



Technical drawing



Connector Options:
SMA - Female
SMA - Male

Unit prices	1-4 pieces	5-9 pieces	10-24 pieces	25-49 pieces	50-99 pieces	100+ pieces
	1860 €	1767 €	1674 €	1581 €	1488 €	1395 €

Delivery Terms

FCA Andechs (free carrier) according to Incoterms 2020. Regarding payment terms and warranty see Terms and Conditions. Delivery time: normally 4 to 6 weeks - depending on quantity ordered and on our work load. **Customer is responsible for observing all applicable export laws in regard to filter application and location of end user.**

Wainwright Instruments GmbH
Graf-Rasso-Street. 1
82346 Andechs
Germany

Contact
Phone: +49 (0) 8152 918230
Telefax: +49 (0) 8152 918255
Email: info@wainwright-filters.com

Legal notes
Managing director: Terence Wainwright
Registering court: Amtsgericht München Abt.B Nr. 58192
VAT Id number: DE 128249711