



Band Reject / Notch Filter

WRCT16-831-833-843-845-75SS

Stopband 833 to 843 MHz

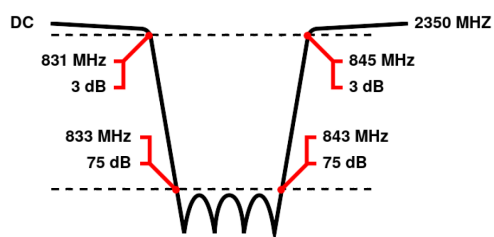
Slopes 2 MHz

Bandwidth 10 MHz

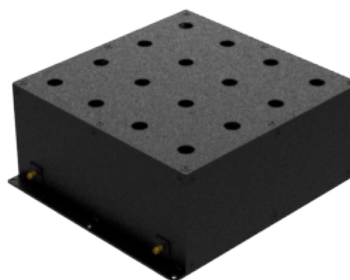
Attenuation 75 dB min.

Passband	DC to 831 MHz and 845 to 2350 MHz
Insertion Loss	1 dB max. (3 dB max. at Corners)
Return Loss	14 dB min. (VSWR 1.5:1 max.)
Stopband	838 (Fo) \pm 5 MHz = 833 to 843 MHz
Stopband Attenuation	75 dB min.
Operating Temperature	15 °C to 45 °C
Power Handling	will be quoted on request (See our warranty)
Dimensions (L x W x H)	max. 270 x 240 x 108 mm (connectors may protrude)
Approx. Weight	10 kg
Mounting Provision	15 mm flanges on both ends with 5.2 mm holes
Connector 1	SMA - Female
Connector 2	SMA - Female

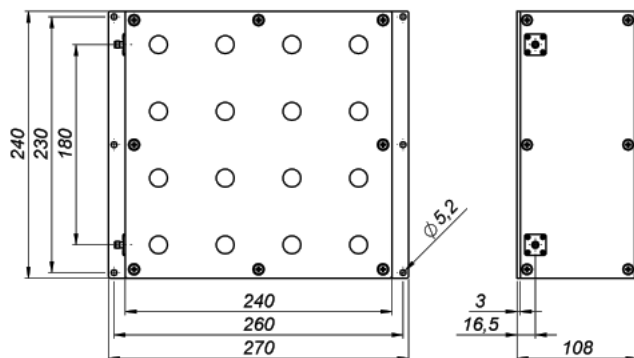
Typical Performance



16 Section Cavity Design



Technical drawing



Connector Options:

SMA - Female
SMA - Male
N - Female
N - Male
BNC - Female
BNC - Male

Unit prices

1-4 pieces
3090 €

5-9 pieces
2936 €

10-24 pieces
2781 €

25-49 pieces
2627 €

50-99 pieces
2472 €

100+ pieces
2318 €

Delivery Terms

FCA Andechs (free carrier) according to Incoterms 2020. Regarding payment terms and warranty see Terms and Conditions. Delivery time: normally 4 to 6 weeks - depending on quantity ordered and on our work load. **Customer is responsible for observing all applicable export laws in regard to filter application and location of end user.**

Wainwright Instruments GmbH
Graf-Rasso-Street. 1
82346 Andechs
Germany

Contact
Phone: +49 (0) 8152 918230
Telefax: +49 (0) 8152 918255
Email: info@wainwright-filters.com

Legal notes
Managing director: Terence Wainwright
Registering court: Amtsgericht München Abt.B Nr. 58192
VAT Id number: DE 128249711