



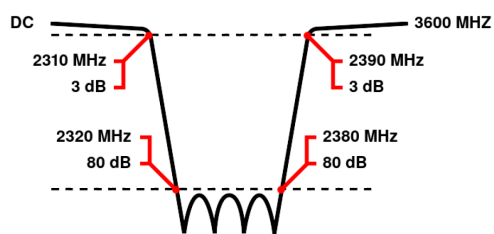
Band Reject / Notch Filter

WRCTG12+16-2310-2320-2380-2390-80SS

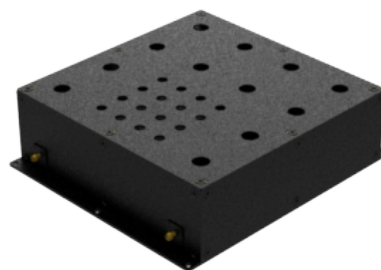
Stopband 2320 to 2380 MHz Slopes 10 MHz Bandwidth 60 MHz Attenuation 80 dB min.

Passband	DC to 2310 MHz and 2390 to 3600 MHz
Insertion Loss	2 dB max. (3 dB max. at Corners)
Return Loss	14 dB min. (VSWR 1.5:1 max.)
Stopband	2350 (Fo) \pm 30 MHz = 2320 to 2380 MHz
Stopband Attenuation	80 dB min.
Operating Temperature	15 °C to 45 °C
Power Handling	will be quoted on request (See our warranty)
Dimensions (L x W x H)	max. 270 x 240 x 76 mm (connectors may protrude)
Approx. Weight	7.2 kg
Mounting Provision	15 mm flanges on both ends with 5.2 mm holes
Connector 1	SMA - Female
Connector 2	SMA - Female

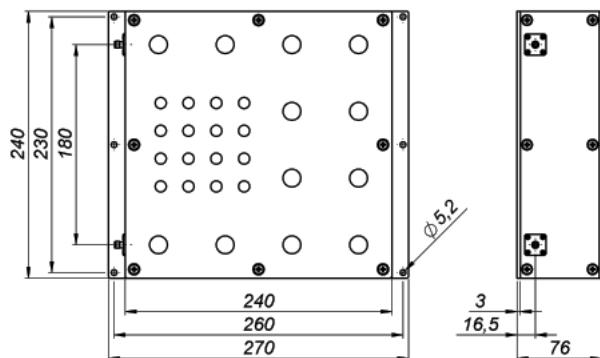
Typical Performance



12+16 Section Cavity Design



Technical drawing



©2013 Wainwright Instruments. All rights reserved.

Connector Options:

SMA - Female
SMA - Male
N - Female
N - Male
BNC - Female
BNC - Male

Unit prices

1-4 pieces
5080 €

5-9 pieces
4826 €

10-24 pieces
4572 €

25-49 pieces
4318 €

50-99 pieces
4064 €

100+ pieces
3810 €

Delivery Terms

FCA Andechs (free carrier) according to Incoterms 2020. Regarding payment terms and warranty see Terms and Conditions. Delivery time: normally 4 to 6 weeks - depending on quantity ordered and on our work load. **Customer is responsible for observing all applicable export laws in regard to filter application and location of end user.**

Wainwright Instruments GmbH
Graf-Rasso-Street. 1
82346 Andechs
Germany

Contact
Phone: +49 (0) 8152 918230
Telefax: +49 (0) 8152 918255
Email: info@wainwright-filters.com

Legal notes
Managing director: Terence Wainwright
Registering court: Amtsgericht München Abt.B Nr. 58192
VAT Id number: DE 128249711