



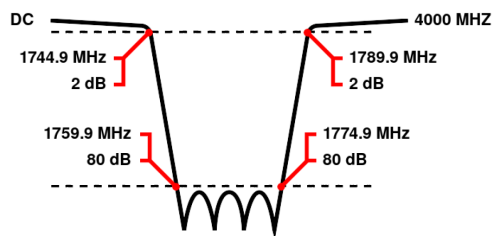
Band Reject / Notch Filter

WRCGV12-1744.9-1759.9-1774.9-1789.9-80SS

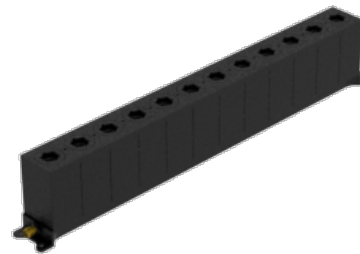
Stopband 1759.9 to 1774.9 MHz Slopes 15 MHz Bandwidth 15 MHz Attenuation 80 dB min.

Passband	DC to 1744.9 MHz and 1789.9 to 4000 MHz
Insertion Loss	1 dB max. (2 dB max. at Corners)
Return Loss	14 dB min. (VSWR 1.5:1 max.)
Stopband	1767.4 (Fo) \pm 7.5 MHz = 1759.9 to 1774.9 MHz
Stopband Attenuation	80 dB min.
Operating Temperature	15 °C to 45 °C
Power Handling	will be quoted on request (See our warranty)
Dimensions (L x W x H)	max. 325 x 30 x 56 mm (connectors may protrude)
Approx. Weight	1.1 kg
Mounting Provision	10 mm flanges on both ends with 3.3 mm holes
Connector 1	SMA - Female
Connector 2	SMA - Female

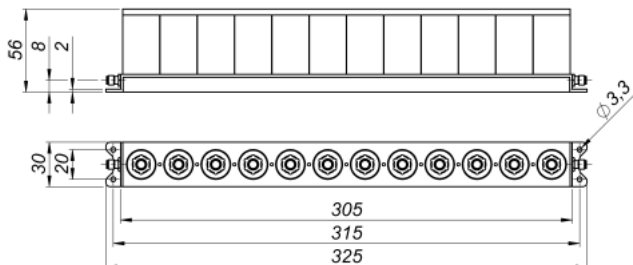
Typical Performance



12 Section Cavity Design



Technical drawing



Connector Options:

SMA - Female
N - Female

Unit prices

1-4 pieces
1890 €

5-9 pieces
1796 €

10-24 pieces
1701 €

25-49 pieces
1607 €

50-99 pieces
1512 €

100+ pieces
1418 €

Delivery Terms

FCA Andechs (free carrier) according to Incoterms 2020. Regarding payment terms and warranty see Terms and Conditions. Delivery time: normally 4 to 6 weeks - depending on quantity ordered and on our work load. **Customer is responsible for observing all applicable export laws in regard to filter application and location of end user.**

Wainwright Instruments GmbH
Graf-Rasso-Street. 1
82346 Andechs
Germany

Contact
Phone: +49 (0) 8152 918230
Telefax: +49 (0) 8152 918255
Email: info@wainwright-filters.com

Legal notes
Managing director: Terence Wainwright
Registering court: Amtsgericht München Abt.B Nr. 58192
VAT Id number: DE 128249711