



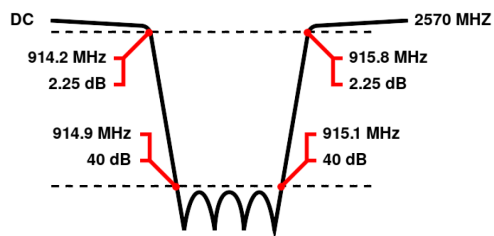
# Band Reject / Notch Filter

## WRCT5-914.2-914.9-915.1-915.8-40SS

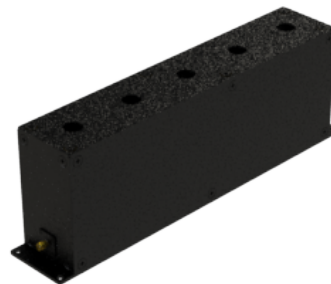
Stopband 914.9 to 915.1 MHz Slopes 0.7 MHz Bandwidth 0.2 MHz Attenuation 40 dB min.

<b>Passband</b>	DC to 914.2 MHz and 915.8 to 2570 MHz
<b>Insertion Loss</b>	0.5 dB max. (2.25 dB max. at Corners)
<b>Return Loss</b>	15 dB min. (VSWR 1.43:1 max.)
<b>Stopband</b>	915 (Fo) $\pm$ 0.1 MHz = 914.9 to 915.1 MHz
<b>Stopband Attenuation</b>	40 dB min.
<b>Operating Temperature</b>	15 °C to 45 °C
<b>Power Handling</b>	will be quoted on request (See our <a href="#">warranty</a> )
<b>Dimensions (L x W x H)</b>	max. 330 x 60 x 108 mm (connectors may protrude)
<b>Approx. Weight</b>	3.3 kg
<b>Mounting Provision</b>	15 mm flanges on both ends with 5.2 mm holes
<b>Connector 1</b>	SMA - Female
<b>Connector 2</b>	SMA - Female

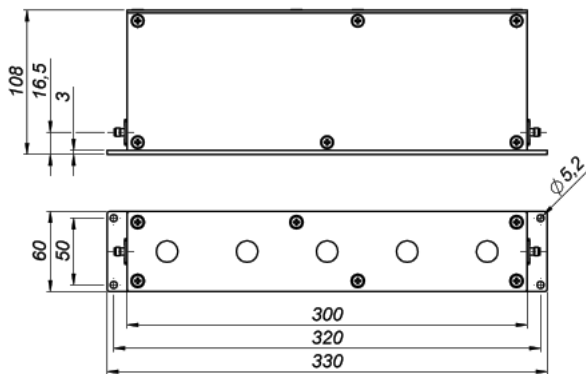
## Typical Performance



## 5 Section Cavity Design



## Technical drawing



### Connector Options:

SMA - Female  
SMA - Male  
N - Female  
N - Male  
BNC - Female  
BNC - Male

## Unit prices

1-4 pieces  
1990 €

5-9 pieces  
1891 €

10-24 pieces  
1791 €

25-49 pieces  
1692 €

50-99 pieces  
1592 €

100+ pieces  
1493 €

## Delivery Terms

FCA Andechs (free carrier) according to Incoterms 2020. Regarding payment terms and warranty see Terms and Conditions. Delivery time: normally 4 to 6 weeks - depending on quantity ordered and on our work load. **Customer is responsible for observing all applicable export laws in regard to filter application and location of end user.**