



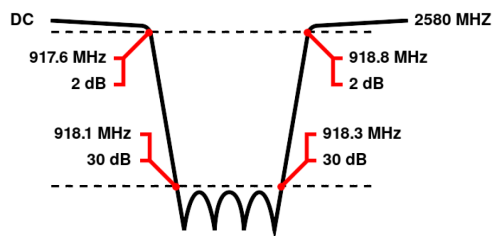
Band Reject / Notch Filter

WRCT8-917.6-918.1-918.3-918.8-30SS

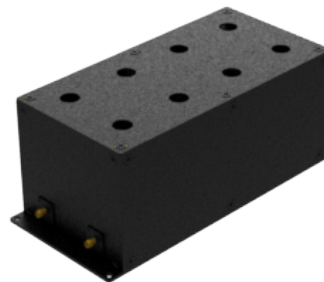
Stopband 918.1 to 918.3 MHz Slopes 0.5 MHz Bandwidth 0.2 MHz Attenuation 30 dB min.

Passband	DC to 917.6 MHz and 918.8 to 2580 MHz
Insertion Loss	0.6 dB max. (2 dB max. at Corners)
Return Loss	15 dB min. (VSWR 1.43:1 max.)
Stopband	918.2 (Fo) \pm 0.1 MHz = 918.1 to 918.3 MHz
Stopband Attenuation	30 dB min.
Operating Temperature	15 °C to 45 °C
Power Handling	will be quoted on request (See our warranty)
Dimensions (L x W x H)	max. 270 x 120 x 108 mm (connectors may protrude)
Approx. Weight	4.8 kg
Mounting Provision	15 mm flanges on both ends with 5.2 mm holes
Connector 1	SMA - Female
Connector 2	SMA - Female

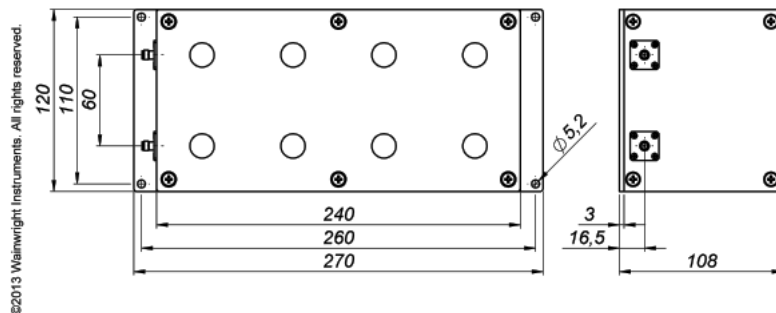
Typical Performance



8 Section Cavity Design



Technical drawing



Connector Options:

SMA - Female
SMA - Male
N - Female
N - Male
BNC - Female
BNC - Male

Unit prices	1-4 pieces	5-9 pieces	10-24 pieces	25-49 pieces	50-99 pieces	100+ pieces
	2290 €	2176 €	2061 €	1947 €	1832 €	1718 €

Delivery Terms

FCA Andechs (free carrier) according to Incoterms 2020. Regarding payment terms and warranty see Terms and Conditions. Delivery time: normally 4 to 6 weeks - depending on quantity ordered and on our work load. **Customer is responsible for observing all applicable export laws in regard to filter application and location of end user.**

Wainwright Instruments GmbH
Graf-Rasso-Street. 1
82346 Andechs
Germany

Contact
Phone: +49 (0) 8152 918230
Telefax: +49 (0) 8152 918255
Email: info@wainwright-filters.com

Legal notes
Managing director: Terence Wainwright
Registering court: Amtsgericht München Abt.B Nr. 58192
VAT Id number: DE 128249711