



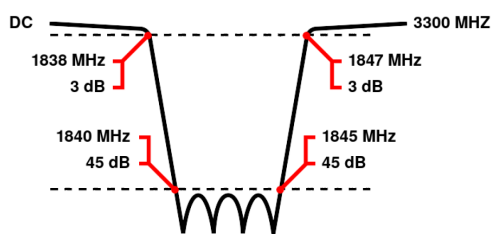
Band Reject / Notch Filter

WRCD15-1838-1840-1845-1847-45SS

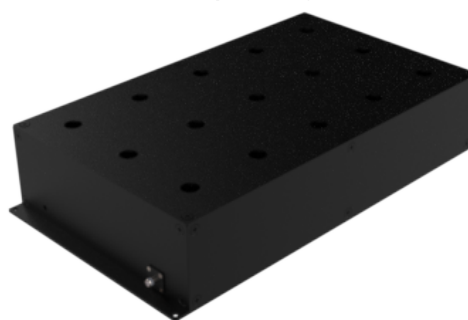
Stopband 1840 to 1845 MHz Slopes 2 MHz Bandwidth 5 MHz Attenuation 45 dB min.

Passband	DC to 1838 MHz and 1847 to 3300 MHz
Insertion Loss	1.75 dB max. (3 dB max. at Corners)
Return Loss	14 dB min. (VSWR 1.5:1 max.)
Stopband	1842.5 (Fo) \pm 2.5 MHz = 1840 to 1845 MHz
Stopband Attenuation	45 dB min.
Operating Temperature	15 °C to 45 °C
Power Handling	will be quoted on request (See our warranty)
Dimensions (L x W x H)	max. 405 x 225 x 82 mm (connectors may protrude)
Approx. Weight	10.5 kg
Mounting Provision	15 mm flanges on both ends with 5.2 mm holes
Connector 1	SMA - Female
Connector 2	SMA - Female

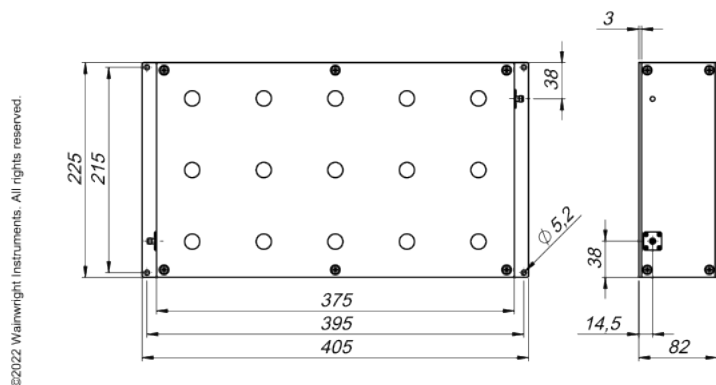
Typical Performance



15 Section Cavity Design



Technical drawing



Connector Options:

SMA - Female
SMA - Male
N - Female
N - Male
BNC - Female
BNC - Male

Unit prices

1-4 pieces
2990 €

5-9 pieces
2841 €

10-24 pieces
2691 €

25-49 pieces
2542 €

50-99 pieces
2392 €

100+ pieces
2243 €

Delivery Terms

FCA Andechs (free carrier) according to Incoterms 2020. Regarding payment terms and warranty see Terms and Conditions. Delivery time: normally 4 to 6 weeks - depending on quantity ordered and on our work load. **Customer is responsible for observing all applicable export laws in regard to filter application and location of end user.**

Wainwright Instruments GmbH
Graf-Rasso-Street. 1
82346 Andechs
Germany

Contact
Phone: +49 (0) 8152 918230
Telefax: +49 (0) 8152 918255
Email: info@wainwright-filters.com

Legal notes
Managing director: Terence Wainwright
Registering court: Amtsgericht München Abt.B Nr. 58192
VAT Id number: DE 128249711