



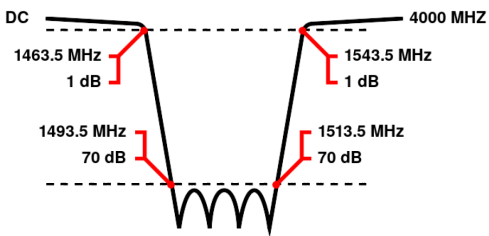
# Band Reject / Notch Filter

## WRCGV6-1463.5-1493.5-1513.5-1543.5-70SS

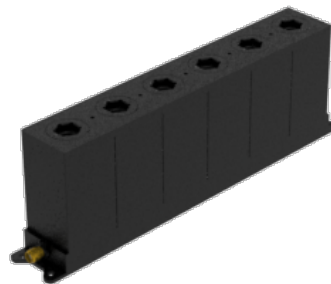
Stopband 1493.5 to 1513.5 MHz Slopes 30 MHz Bandwidth 20 MHz Attenuation 70 dB min.

<b>Passband</b>	DC to 1463.5 MHz and 1543.5 to 4000 MHz
<b>Insertion Loss</b>	0.8 dB max. (1 dB max. at Corners)
<b>Return Loss</b>	14 dB min. (VSWR 1.5:1 max.)
<b>Stopband</b>	1503.5 (Fo) ± 10 MHz = 1493.5 to 1513.5 MHz
<b>Stopband Attenuation</b>	70 dB min.
<b>Operating Temperature</b>	15 °C to 45 °C
<b>Power Handling</b>	will be quoted on request (See our <a href="#">warranty</a> )
<b>Dimensions (L x W x H)</b>	max. 205 x 30 x 65 mm (connectors may protrude)
<b>Approx. Weight</b>	0.85 kg
<b>Mounting Provision</b>	10 mm flanges on both ends with 3.3 mm holes
<b>Connector 1</b>	SMA - Female
<b>Connector 2</b>	SMA - Female

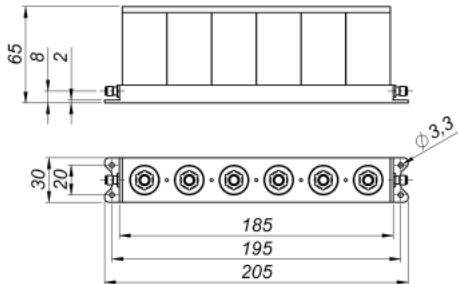
### Typical Performance



### 6 Section Cavity Design



### Technical drawing



©2013 Wainwright Instruments. All rights reserved.

**Connector Options:**  
SMA - Female  
N - Female

<b>Unit prices</b>	<b>1-4 pieces</b> 1290 €	<b>5-9 pieces</b> 1226 €	<b>10-24 pieces</b> 1161 €	<b>25-49 pieces</b> 1097 €	<b>50-99 pieces</b> 1032 €	<b>100+ pieces</b> 968 €
--------------------	-----------------------------	-----------------------------	-------------------------------	-------------------------------	-------------------------------	-----------------------------

### Delivery Terms

FCA Andechs (free carrier) according to Incoterms 2020. Regarding payment terms and warranty see Terms and Conditions. Delivery time: normally 4 to 6 weeks - depending on quantity ordered and on our work load. **Customer is responsible for observing all applicable export laws in regard to filter application and location of end user.**

**Wainwright Instruments GmbH**  
Graf-Rasso-Street. 1  
82346 Andechs  
Germany

**Contact**  
Phone: +49 (0) 8152 918230  
Telefax: +49 (0) 8152 918255  
Email: [info@wainwright-filters.com](mailto:info@wainwright-filters.com)

**Legal notes**  
Managing director: Terence Wainwright  
Registering court: Amtsgericht München Abt.B Nr. 58192  
VAT Id number: DE 128249711