



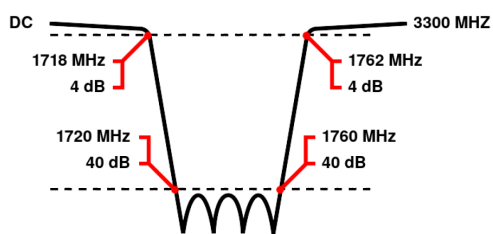
Band Reject / Notch Filter

WRCTG12+8-1718-1720-1760-1762-40SS

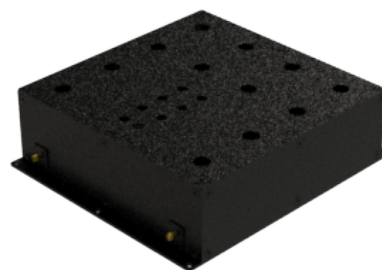
Stopband 1720 to 1760 MHz Slopes 2 MHz Bandwidth 40 MHz Attenuation 40 dB min.

Passband	DC to 1718 MHz and 1762 to 3300 MHz
Insertion Loss	2 dB max. (4 dB max. at Corners)
Return Loss	14 dB min. (VSWR 1.5:1 max.)
Stopband	1740 (Fo) \pm 20 MHz = 1720 to 1760 MHz
Stopband Attenuation	40 dB min.
Operating Temperature	15 °C to 45 °C
Power Handling	will be quoted on request (See our warranty)
Dimensions (L x W x H)	max. 270 x 240 x 76 mm (connectors may protrude)
Approx. Weight	6.5 kg
Mounting Provision	15 mm flanges on both ends with 5.2 mm holes
Connector 1	SMA - Female
Connector 2	SMA - Female

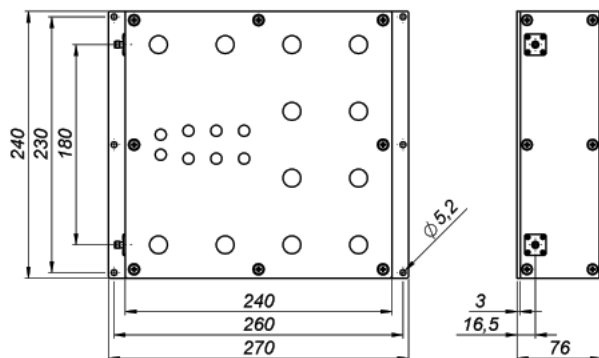
Typical Performance



12+8 Section Cavity Design



Technical drawing



Connector Options:

SMA - Female
SMA - Male
N - Female
N - Male
BNC - Female
BNC - Male

Unit prices

1-4 pieces
4280 €

5-9 pieces
4066 €

10-24 pieces
3852 €

25-49 pieces
3638 €

50-99 pieces
3424 €

100+ pieces
3210 €

Delivery Terms

FCA Andechs (free carrier) according to Incoterms 2020. Regarding payment terms and warranty see Terms and Conditions. Delivery time: normally 4 to 6 weeks - depending on quantity ordered and on our work load. **Customer is responsible for observing all applicable export laws in regard to filter application and location of end user.**