



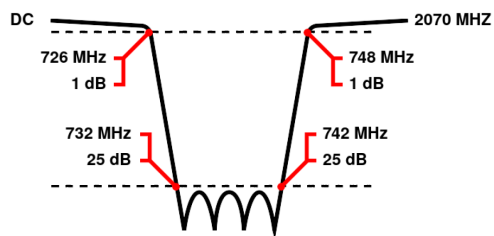
Band Reject / Notch Filter

WRCGV6-726-732-742-748-25SS

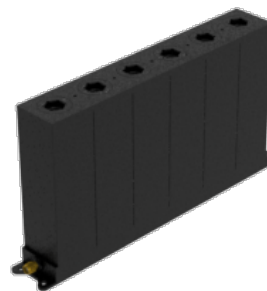
Stopband 732 to 742 MHz Slopes 6 MHz Bandwidth 10 MHz Attenuation 25 dB min.

Passband	DC to 726 MHz and 748 to 2070 MHz
Insertion Loss	0.65 dB max. (1 dB max. at Corners)
Return Loss	14 dB min. (VSWR 1.5:1 max.)
Stopband	737 (Fo) \pm 5 MHz = 732 to 742 MHz
Stopband Attenuation	25 dB min.
Operating Temperature	15 °C to 45 °C
Power Handling	will be quoted on request (See our warranty)
Dimensions (L x W x H)	max. 205 x 30 x 105 mm (connectors may protrude)
Approx. Weight	1.05 kg
Mounting Provision	10 mm flanges on both ends with 3.3 mm holes
Connector 1	SMA - Female
Connector 2	SMA - Female

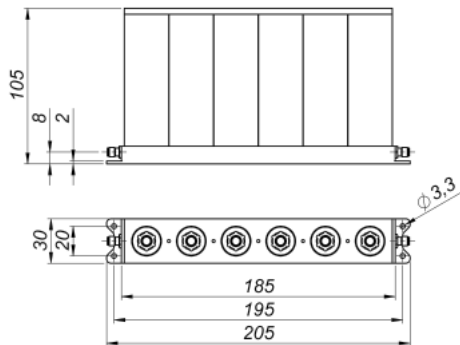
Typical Performance



6 Section Cavity Design



Technical drawing



Connector Options:

SMA - Female
N - Female

Unit prices

1-4 pieces
1290 €

5-9 pieces
1226 €

10-24 pieces
1161 €

25-49 pieces
1097 €

50-99 pieces
1032 €

100+ pieces
968 €

Delivery Terms

FCA Andechs (free carrier) according to Incoterms 2020. Regarding payment terms and warranty see Terms and Conditions. Delivery time: normally 4 to 6 weeks - depending on quantity ordered and on our work load. **Customer is responsible for observing all applicable export laws in regard to filter application and location of end user.**

Wainwright Instruments GmbH
Graf-Rasso-Street. 1
82346 Andechs
Germany

Contact
Phone: +49 (0) 8152 918230
Telefax: +49 (0) 8152 918255
Email: info@wainwright-filters.com

Legal notes
Managing director: Terence Wainwright
Registering court: Amtsgericht München Abt.B Nr. 58192
VAT Id number: DE 128249711