



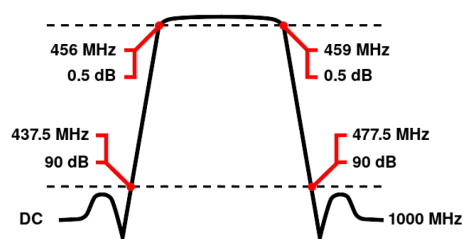
Band Pass Filter

WBCA5-437.5-456-459-477.5-90HH

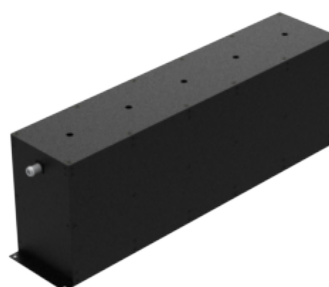
Passband 456 to 459 MHz Slopes 18.5 MHz Bandwidth 3 MHz Attenuation 90 dB min.

Passband	457.5 (Fo) \pm 1.5 MHz = 456 to 459 MHz
Insertion Loss	0.45 dB max. at Fo (0.5 dB max. at Corners)
Return Loss	20 dB min. (VSWR 1.22:1 max.)
Stopband	DC to 437.5 MHz and 477.5 to 1000 MHz
Stopband Attenuation	90 dB min.
Operating Temperature	15 °C to 45 °C
Power Handling	max. 1600 W CW into a 2:1 VSWR (See our warranty)
Dimensions (L x W x H)	max. 677 x 140 x 225 mm (connectors may protrude)
Approx. Weight	16.5 kg
Mounting Provision	20 mm flanges on both ends with 5.5 mm holes
Connector 1	7/16" - Female
Connector 2	7/16" - Female

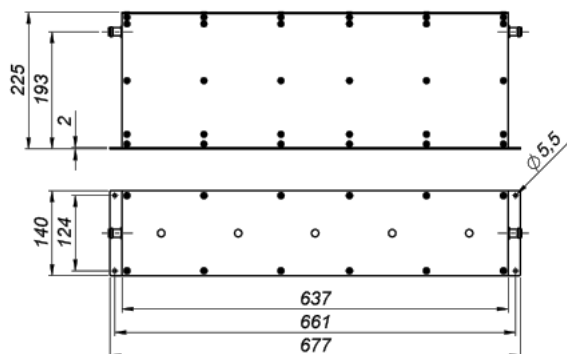
Typical Performance



5 Section Cavity Design



Technical drawing



Connector Options:
7/16" - Female

Unit prices

1-4 pieces	5-9 pieces	10-24 pieces	25-49 pieces	50-99 pieces	100+ pieces
4790 €	4551 €	4311 €	4072 €	3832 €	3593 €

Delivery Terms

FCA Andechs (free carrier) according to Incoterms 2020. Regarding payment terms and warranty see Terms and Conditions. Delivery time: normally 4 to 6 weeks - depending on quantity ordered and on our work load. **Customer is responsible for observing all applicable export laws in regard to filter application and location of end user.**

Wainwright Instruments GmbH
Graf-Rasso-Street. 1
82346 Andechs
Germany

Contact
Phone: +49 (0) 8152 918230
Telefax: +49 (0) 8152 918255
Email: info@wainwright-filters.com

Legal notes
Managing director: Terence Wainwright
Registering court: Amtsgericht München Abt.B Nr. 58192
VAT Id number: DE 128249711