



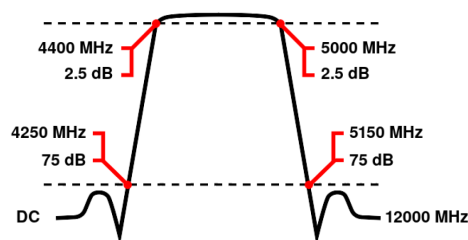
Band Pass Filter

WBCX16-4250-4400-5000-5150-75SS

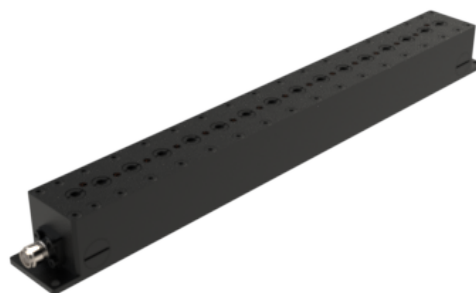
Passband 4400 to 5000 MHz Slopes 150 MHz Bandwidth 600 MHz Attenuation 75 dB min.

Passband	4700 (Fo) \pm 300 MHz = 4400 to 5000 MHz
Insertion Loss	1.5 dB max. at Fo (2.5 dB max. at Corners)
Return Loss	14 dB min. (VSWR 1.5:1 max.)
Stopband	DC to 4250 MHz and 5150 to 12000 MHz
Stopband Attenuation	75 dB min.
Operating Temperature	15 °C to 45 °C
Power Handling	max. 50 W CW into a 2:1 VSWR (See our warranty)
Dimensions (L x W x H)	max. 207 x 22 x 20.5 mm (connectors may protrude)
Approx. Weight	0.5 kg
Mounting Provision	10 mm Flanges on both ends with 2.5 mm holes
Connector 1	SMA - Female
Connector 2	SMA - Female

Typical Performance



16 Section Cavity Design



Technical drawing

drawing currently unavailable

Connector Options:
SMA - Female

Unit prices

1-4 pieces	5-9 pieces	10-24 pieces	25-49 pieces	50-99 pieces	100- pieces
1940 €	1843 €	1746 €	1649 €	1552 €	1455 €

Delivery Terms

FCA Andechs (free carrier) according to Incoterms 2020. Regarding payment terms and warranty see Terms and Conditions. Delivery time: normally 4 to 6 weeks - depending on quantity ordered and on our work load. **Customer is responsible for observing all applicable export laws in regard to filter application and location of end user.**

Wainwright Instruments GmbH
Graf-Rasso-Street. 1
82346 Andechs
Germany

Contact
Phone: +49 (0) 8152 918230
Telefax: +49 (0) 8152 918255
Email: info@wainwright-filters.com

Legal notes
Managing director: Terence Wainwright
Registering court: Amtsgericht München Abt.B Nr. 58192
VAT Id number: DE 128249711