



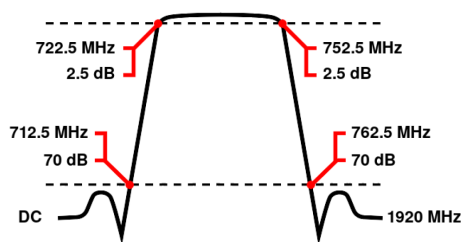
Band Pass Filter

WBCGV12-712.5-722.5-752.5-762.5-70SS

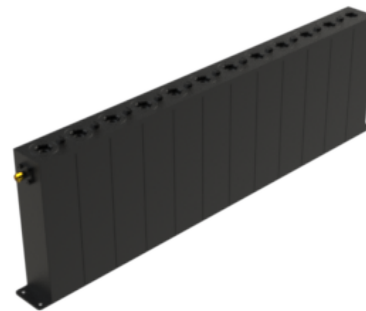
Passband 722.5 to 752.5 MHz Slopes 10 MHz Bandwidth 30 MHz Attenuation 70 dB min.

Passband	737.5 (Fo) \pm 15 MHz = 722.5 to 752.5 MHz
Insertion Loss	1.5 dB max. at Fo (2.5 dB max. at Corners)
Return Loss	14 dB min. (VSWR 1.5:1 max.)
Stopband	DC to 712.5 MHz and 762.5 to 1920 MHz
Stopband Attenuation	70 dB min.
Operating Temperature	15 °C to 45 °C
Power Handling	will be quoted on request (See our warranty)
Dimensions (L x W x H)	max. 385 x 30 x 115 mm (connectors may protrude)
Approx. Weight	2.15 kg
Mounting Provision	10 mm flanges on both ends with 3.3 mm holes
Connector 1	SMA - Female
Connector 2	SMA - Female

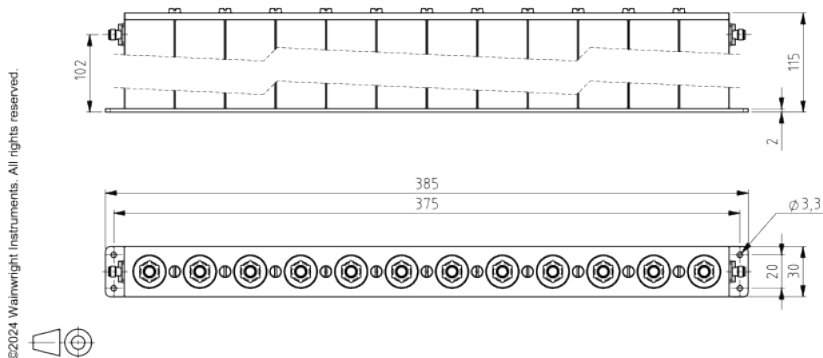
Typical Performance



12 Section Cavity Design



Technical drawing



Connector Options:

SMA - Female
SMA - Male
N - Female
N - Male
BNC - Female
BNC - Male

Unit prices

1-4 pieces
2190 €

5-9 pieces
2081 €

10-24 pieces
1971 €

25-49 pieces
1862 €

50-99 pieces
1752 €

100+ pieces
1643 €

Delivery Terms

FCA Andechs (free carrier) according to Incoterms 2020. Regarding payment terms and warranty see Terms and Conditions. Delivery time: normally 4 to 6 weeks - depending on quantity ordered and on our work load. **Customer is responsible for observing all applicable export laws in regard to filter application and location of end user.**

Wainwright Instruments GmbH
Graf-Rasso-Street. 1
82346 Andechs
Germany

Contact
Phone: +49 (0) 8152 918230
Telefax: +49 (0) 8152 918255
Email: info@wainwright-filters.com

Legal notes
Managing director: Terence Wainwright
Registering court: Amtsgericht München Abt.B Nr. 58192
VAT Id number: DE 128249711